



**PRODUCT CATALOGUE
2022**



Who are we?

Nanotek Construction was established in 2005 to carry out sales & marketing and logistics activities of BASF building chemical products in the Marmara Region. There is a logistics center with a closed area of 1800 m² in Sultanbeyli and a 1000 m² open area in Sultanbeyli, a logistics center with a closed area of 2000 m² in Firuzköy and a logistics center with 750 m² closed and 500 m² open area in Çorlu. With its wide car track and solid financial structure, Nanotek has taken its place among the number of reliable companies of the building sector in a short time. Nanotek serves hundreds of projects in the Marmara Region as a strategic solution partner with a strong team of 40 people. Nanotek continues to work and continues to develop depending on the principle of customer satisfaction and excellence. In addition to MBS building chemicals, Nanotek has a complementary role in the supply of auxiliary building materials with its " Nano " concept branded products. Nanotek includes experienced sales and project managers, dealer and project management model, routine technical and personal training programs, social organizations, visual and written printing arguments. Nanotek continues to be a locomotive and decisive company in the construction sector. Nanotek will continue to present the technical materials that the building sector needs to the service of existing solution partners and to create new service channels at home and abroad.



OUR MISSION

By the help of the moral and material support, businessman characteristics, management, technical and commercial skills of our founding partners.

With a strong market share, we are a firm that develops business policies that contribute to national and moral values of our country, meets the requirements of our suppliers and dealers with an understanding top-level quality and service, provides solution-oriented sales and technical support, employs qualified and devoted personnel, have a national and international recognition and sufficient equity capital, is respected in the sector, and that reassures its employees, suppliers, dealers and partners;

We contribute to the qualified and economical structuring, a healthy development of the technical structure materials market, elimination of unfair competition, and facilitation of technological developments in our field of operation; with our products with advanced technology, we provide a service that is suitable for changes and developments, that is reliable, is of high-quality, quick, and professional.

OUR VISION

Our field of operation will turn into an international center of business, finance, and culture, all lands will increase in value, projects will be constructed using materials of high-quality; and for many years to come, the need and demand for the high-grade construction materials engineering services by NANOTEK will continue.

OUR FUNDAMENTAL VALUES

Using legitimate and permissible methods, fully complying with rights, agreements, contracts and regulations in all our works.

Standing against unfair competition, preferring a constructive, improving, ethical competition.

Protecting the privacy of our business partners, collaborator supply sources, our employees, customers and their customers and respecting their values and principles.

Minimizing the competition among our solution partners, supporting them with fairly with the same distance, and evaluating their performances in business relationships.

Adopting a solution-oriented, participatory management understanding with a sense of responsibility.

Being open to innovation and continuous development.

Providing motivation to the employees.



We offer the following solutions;

- **Construction Chemicals**
 - **Bitumen Membranes**
 - **EPDM and TPO Membranes**
 - **Passive Fire Retardants**
 - **Smart Waterproofing Membrane**
 - **Sodium bentonite-based Geocomposite Waterproofing**
 - **PVC Membranes**
 - **XPS Thermal Insulation Products**
 - **EPS Thermal Insulation Products**
 - **Shingle Decorative Roof Coverings**
 - **Drainage and Siphon Systems**
 - **Rockwool Thermal Insulation Products**
 - **Mineralwool Thermal Insulation Products**
 - **Ceramicwool Thermal Insulation Products**
 - **Protection and Drainage Plates**
 - **Green Roof Systems**
 - **Paint Group**
 - **Condensation Insulation Panels**
 - **XPE, HPE Cross Tied Polyethylene Mattress**
 - **OSB Plates**
 - **Floor Protection Foil**
 - **Bituminous Waterproofing Covers**
 - **Geotextile Products**
 - **Fiberglass Meshes**
 - **Textile Waterproofing Products**
 - **Interior/Exterior Special Paints**
 - **Applicator Guns**
 - **Butyl Tapes**
 - **Self-Adhesive Waterproofing Covers**
-



Construction Chemicals

About Master Builders Solutions;

With Master Builders Solutions, a global brand is provided with regards to the advanced chemical solutions for MBCC group. The brand has been constructed of the existing strength of MBCC group brands and products, represents our over 100 years of experience in the construction sector.

Master Builders Solutions brand gathers the expertise of the MBCC group through delivering chemical solutions for construction, maintenance, restoration and renovation of buildings. Master Builders Solutions has been founded on the experience of over 100 years in the construction industry.

The comprehensive portfolio under the brand of Master Builders Solutions covers lasting solutions for building, maintenance, restoration, and renovation of structures.

Concrete Additives

Cement Additives

solutions for Underground Structures

High-Performance Grout Products

Restoration and Fortification Solutions

Waterproofing Solutions

Joint Fillers and Ceramics Solutions

High-Performance Flooring solutions

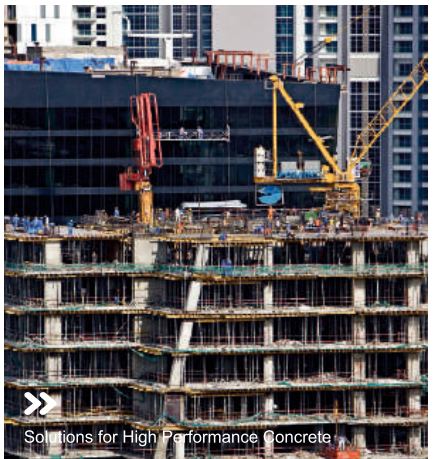
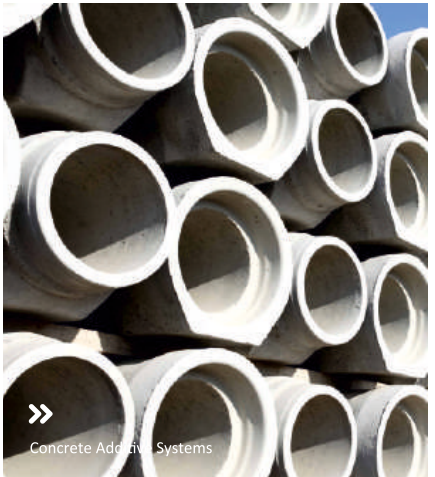
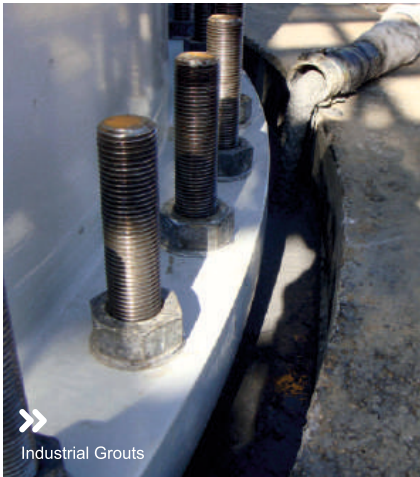
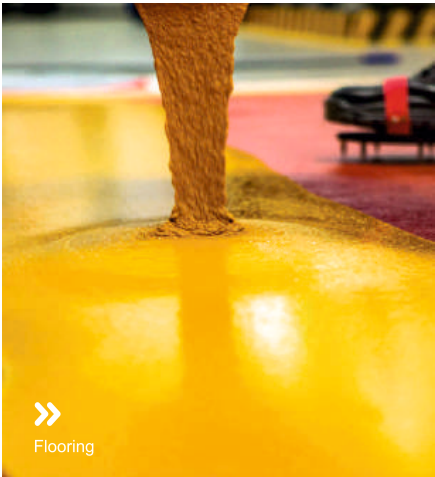
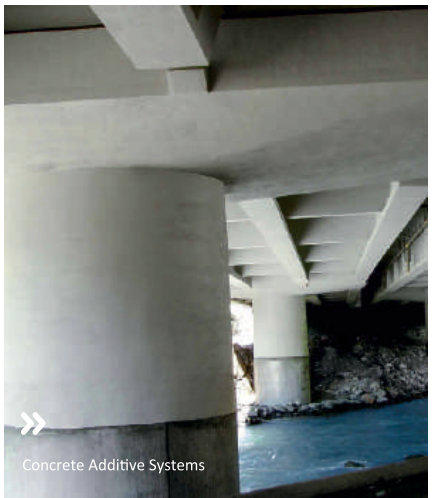
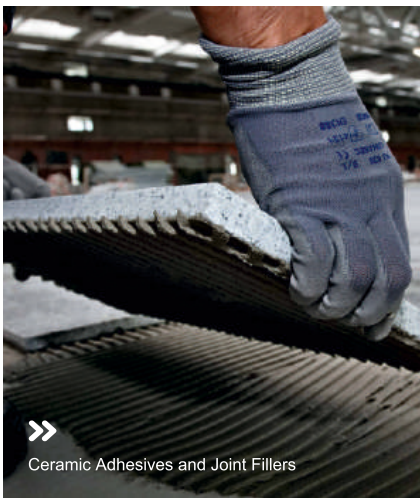


Reliable solutions by MBCC group;

In Master Builders Solutions

We offer the following solutions;

- Ceramic Adhesives and Joint Fillers
- Waterproofing Systems and Mastics
- Restoration and Fortification Systems
- Flooring Systems
- Concrete Additive Systems
- Underground Structure Systems





About Bitunil;

BITUNIL was founded in the year 2000, by a group of Egyptian, Arab and European established firms, with profound professional and industrial business experience, and international exposure. The credibility of the founding group set the course for BITUNIL to be in the lead of the roofing industry in the Middle East.

BITUNIL products comprise a wide range of torch-able/ hot air welded and self-adhesive Modified Bitumen Membranes, designed to fulfill most construction applications for different building types. BITUNIL is also expanding its product range to include complementary products to better serve its customers through integrated roofing and waterproofing total solutions.

The BITUNIL plant is located in Alexandria, and is equipped with state-of- the art production lines, for the manufacture of high quality products, in strict compliance with internationally recognized standards. It has a design capacity of 25 million square meters of modified bitumen membranes per annum.

BITUNIL, endeavors for realizing its vision to play a leading role in the development of the roofing and waterproofing industry in Egypt, the Middle East and Worldwide.

Foundation and Single Face Mold Bitumen Membranes

We offer the following solutions;

- NILOSTICK 1500 3 mm SBS Additive Self Adhesive Bitumen Membrane
- NILOFLEX PY 3,5 mm Sand finish SBS Additive Bitumen Membrane
- NILOFLEX PY 4 mm Sand finish SBS Additive Bitumen Membrane
- NILOFLEX PY 4,5 mm Sand finish SBS Additive Bitumen Membrane
- BITUGUM 20 CS 4 - 4,5 mm Double Carrier SBS Additive Bitumen Membrane

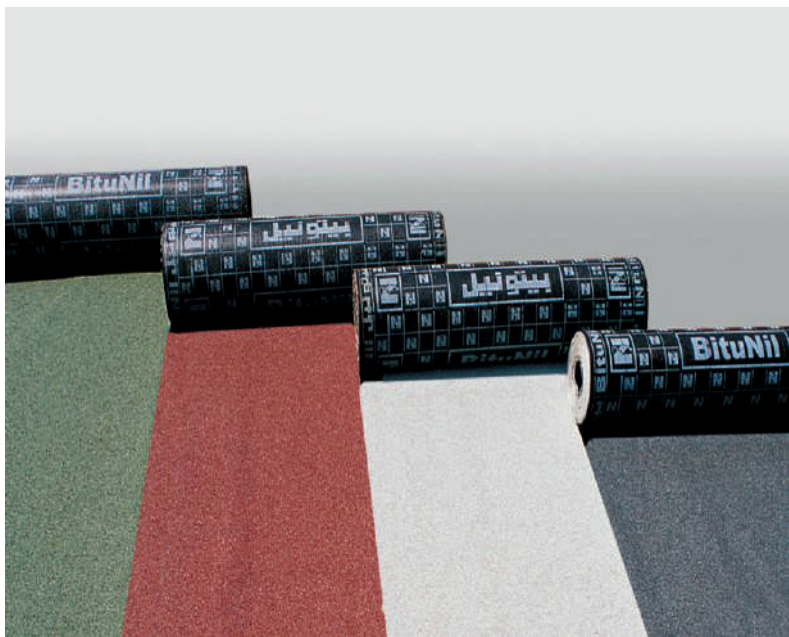
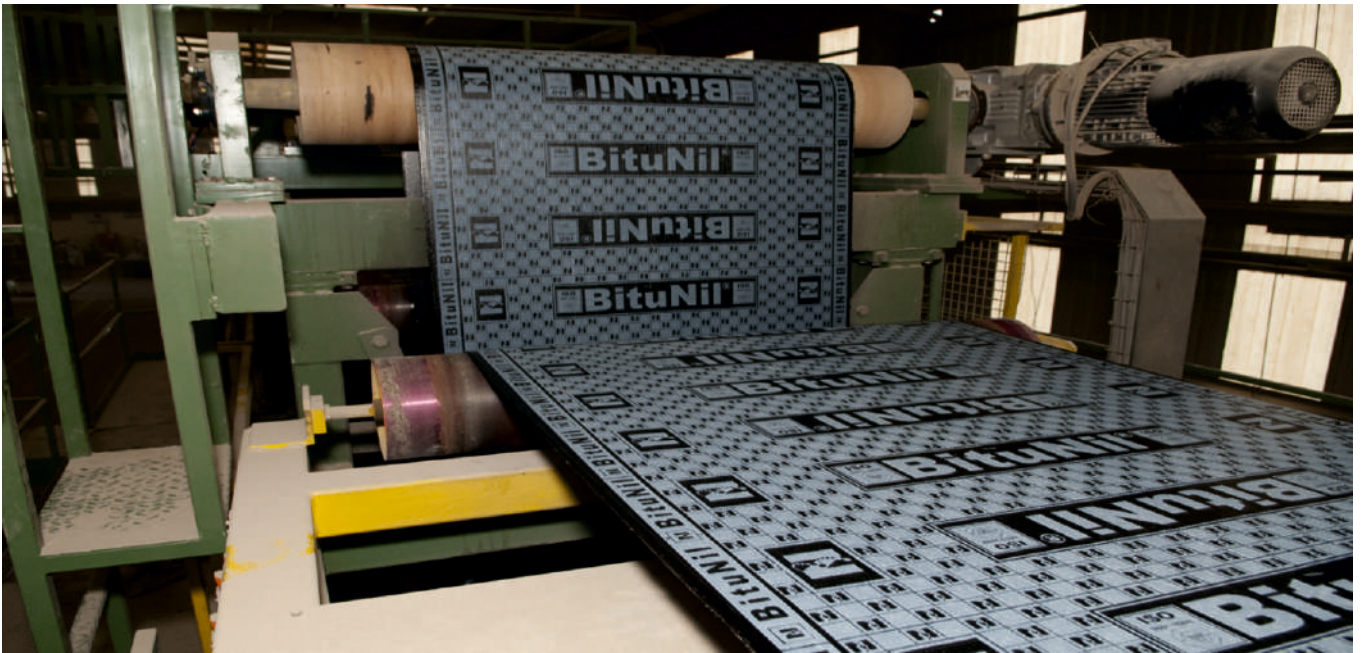
Quality Control & Certification

BITUNIL labs are set with state of the art testing equipment, and facilities. They are managed by a team of experts, constantly controlling and refining the production processes. Quality control measures are applied to control and monitor raw materials, supervise the product at different stages of production, and evaluate the final finished product.

BITUNIL products have been certified by CE mark and are now dynamically marketed in the European Union market.

BITUNIL the consistent product quality achieved by BITUNIL is highly acknowledged by its customers. Such recognition is a result of years of experience and a policy of continuous improvement and development, combined with a quality management system developed in conformity with ISO 9001.







About Firestone;

The reason for the increased use of EPDM membranes especially on terrace-roofs is the achievement of the system in meeting modern building standards with its performance. Firestone RubberGard EPDM membrane has a unique combination of all features desired in all the roofing applications around the world.

Fast and easy application;

Firestone RubberGard EPDM is produced in large panels that can reach up to 15 meters of widths and 61 meters of lengths, thus minimizing the number of joints and the mounting time in the building sites.

Superior resistance and extended life under weather conditions;

Thanks to the composition of its content materials, which is essentially made of EPDM polymers and carbon black, Firestone RubberGard EPDM offers an unrivaled resistance to ozone, UV radiation, and aging.

We offer the following solutions;

- EPDM Roof Insulation Systems
- TPO Roof Insulation Systems
- Polyiso Thermal Insulation Plates
- Accessories

High flexibility and stretching;

Firestone RubberGard EPDM is flexible and can stretch by over 300% down to -45 °C temperatures, thus easily adapting to structural movements and temperature differences.

Short service life cost;

Firestone RubberGard EPDM requires little to none maintenance. Considering this feature together with its durability a roof covered with EPDM costs a lot less compared to the service life.





EPDM Roof Insulation Membranes



TPO Roof Insulation Membranes



Polyiso Thermal Insulation Plates



Accessories





Passive Fire Retarding Systems;

Passive Fire Retarding Systems are used for decelerating the fire propagation between the locations for a certain period. No active firefighting system can prevent the propagation of the smokes and toxic gases, which are at least as hazardous as the flames of a fire, within the building. Therefore, implementation of Passive Fire Retarding Systems is an obligation as well as using sprinklersystem and gas extinguishing systems. Loss of lives in fires are caused by smoke and has poisonings or evacuation problems due to limited visibility distances. The most effective way of preventing loss of lives as well as financial damages is implementing Passive Fire Retarding Systems.

The walls and flooring of the identified fire zones in the buildings are made of fire-resistant materials based on the risk of fire, however, electrical-mechanical installations and constructional joints constitute the weak points in the spread of fire. Application of Nanoflame Passive Fire Retarding Systems on such installation passages and joints ensures limiting the fire within the concerned area during the time required for the evacuation of the building and intervening the fire. For all these reasons, application of Passive Fire Retarding Systems has been an obligation as per the Regulation on Fire Protection of Buildings.

27.11.2007
2007/12937

We offer the following solutions;

- Mastics and Foams
- Coatings
- Grouts
- Paints
- Pads
- Clamps
- Bands
- Featured Products

As the application of Passive Fire Retarding Systems in buildings will prevent the fire from spreading, a reduction of the premium is received from insurance companies. The saving to be attained with such reduction ensures that the system redeems itself.







About Bitufa;

The story of Flexobit was started in the Netherlands by Birufa Waterproofing BV, producing SMART Waterproofing solutions since 1979. The research, based on the 'research for the better, always-for everyone', has been continuing for 38 years in its 'High-Tech' production facilities in Wapenveld. With the purpose of protecting buildings against waterproofing problems, and preventing and losses of time and resources in businesses, BITUFA operates with the principal goal of protecting people from risks of diseases and collapses.

It incorporates a large R&D department in order to provide products and services with the same quality to mega projects in 48 countries.

We offer the following solutions;

- FLEXOBIT Smart Waterproofing Membrane
- FLEXOWALLL Intelligent state waterproofing membrane

Flexobit;

- Is 1000% Flexible
- Self-Healing
- Has Unting Joints (Uniforming)
- 5 mm Homogeneous
- Insulate with a Single Layer
- And Provides Solution with a

Single Membrane.







About Cetco;

CETCO® is a full affiliate of the AMCOL® International Companies Group and is a company that offers innovative products and practical solutions, which has been designed for harsh environmental conditions, to Environmental and Construction Engineering applications.

CETCO provides its services within a wide range:

- Engineering-supported applications
- Technical support
- Project-specific solutions
- Leadership in Research & Development services

For over 45 years, architects, engineers, and contractors have relied on Volclay waterproofing systems by CETCO and carried out the application of CETCO products in thousands of projects all over the world. CETCO is in a leading position in the sector with its products, as well as its original Quality Assurance Program, which has been established through training certification applicators and independent auditors.

We offer the following solutions;

- VOLTEX® Sodium bentonite-based geocomposite waterproofing
- VOLTEX DS® Polyethylene film membrane-reinforced sodium bentonite-based geocomposite waterproofing
- VOLTEX CRDS® Polymer-reinforced Sodium bentonite-based geocomposite waterproofing
- SWELLTITE® High-density polyethylene geomembrane-integrated sodium bentonite-based butyl waterproofing composite (HDPE)
- ULTRASEAL® Advanced technology bentonite/polymer alloy
- COREFLEX® Thermoplastic technology waterproofing membrane with APC technology (Active Polymer Core)

Volclay waterproofing systems essentially have the self-adhesive and self-healing properties, and is capable of filling small gaps and the pebble dents on concrete surfaces without necessitating a qualified labor force.

Main benefits of using geocomposites:

Mechanical joints with fresh concrete (shell adherence)

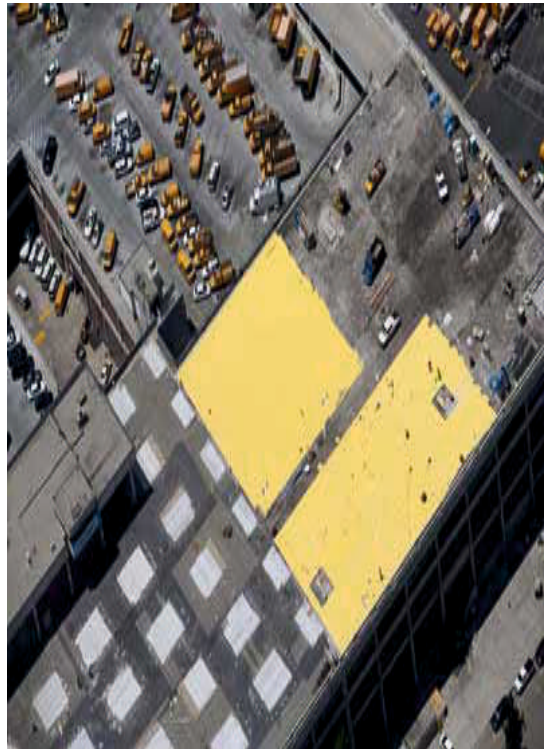
Prevention of lateral movements of the water

Application under all weather conditions

Application on rough and granular surfaces

A significant decrease in the amount of use compared to its competitors.

Volclay waterproofing materials also offer the additional advantages of being environment-friendly products.





What is PVC Membrane?

PVC Membrane is the best-known thermoplastic waterproofing material. It turns into the semi-solid state from the solid state with adequate heat, thus allowing for overlapping and bonding. After coating and compression, it turns back to the solid state and works as a uniform cover.

Nanopren PVC membranes are produced, especially with the special mold shapes, in; 1,2 mm, 2 mm, 2.5 mm, 3 mm thickness, 2.20 m widths, and 20 m heights.

Intended Use;

Besides uses for waterproofing, thanks to its high chemical resistance, it can be confidently used for all applications requiring protection of concrete against chemical substances of gas, acid and base origins.

We offer the following solutions;

- Nanopren 1,2 mm - 1,5 mm - 2,00 mm
- Plasticized PVC-Based Homogeneous Synthetic Membranes
- Nanopren 1,5 mm - 2,00 mm - 3,00 mm
- Plasticized PVC-Based Signal Layered Non-Reinforced Membranes
- Nanopren 1,5 mm - 2,00 mm
- PVC resin, plasticizer stabilizer,
- PVC Membranes attained through UV additives and colorants
- Nanopren Drinking Water Compatible Synthetic Membrane
- Nanopren Waterstop Band

Fields of use;

- Highway Tunnels
- Industrial Landfill Facilities
- Building Basement Tanking
- Treatment Facilities
- Oil Fields
- Mining
- Ornamental Pools
- Artificial Ponds
- Water Tanks
- Bridges
- Parking Lots
- Building Terraces and Roofs



Pool Insulation



Drinking Water Tank Insulation



Sub-Basement Insulation



Reinforced Concrete Curtain Wall Insulation



Waterproofing on Lean Concrete



Roof Insulation



About ODE;

Starting its commercial activities by undertaking operations in a small shop in İstanbul Beşiktaş in 1985, ODE entered into one of the most needed fields in Turkey in 1988 and decided to advance in the insulation sector. Importing insulation materials ends selling them in Turkey in 1990. ODE combined its experience over 10 years with the production in 1996. Stepping into the insulation sector by putting international quality products to the market, ODE has carried out all its projects with its productive characteristic, as well as always believing that the production in Turkey must be the very best.

It started the production in Turkey in 1996.

Selling the products for the construction and industry sector directly from the company's head office during the first years, ODE underwent a transition to the dealership system in 1992. ODE Insulation started to extrude polyethylene foam production with the ODE Flex brand on a 2,100 m² field in 1996 and initiated elastomeric rubber foam production with the ODE R-Flex brand on a 5,000 m² field in 2000. Reaching an annual production capacity of 5 thousand tons of rubber foam, ODE has become one of the leading insulation material producers in Turkey upon obtaining 4 modern production facilities with 120,000 m² indoor space and 35,000 m² outdoor space in Tekirdağ, Çorlu during the early years of 2000.

We offer the following solutions;

- Bituminous Waterproofing Membranes
- XPS Thermal Insulation Plates
- Glaswool Blankets
- Rubber Plate and Tube Insulations

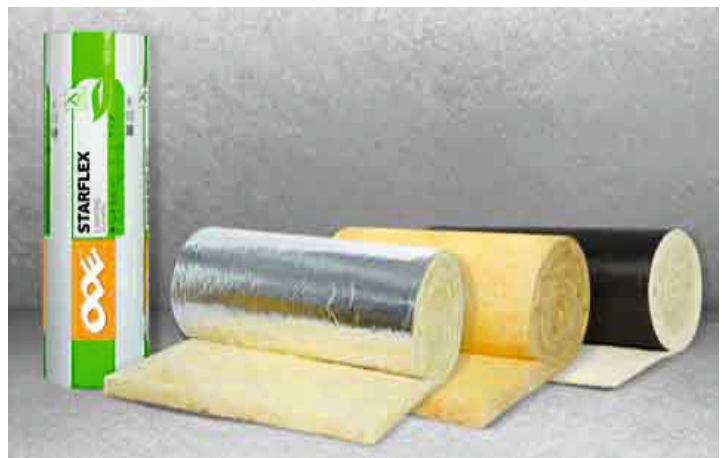




Bituminous Waterproofing Membranes



Glaswool Blankets



XPS Thermal Insulation Plates



Rubber Plate and Tube Insulation





About BTM;

The foundations of BTM, one of the leading insulation companies in Turkey, with its head office located in İzmir, has been laid by the Turkey Bottle Glass Community in İstanbul in 1975. And since 1986, it has been conducting its increasing operations with new and technological investments in the production facilities in İzmir/Kemalpaşa Organized Industrial zone. It has a total of 5 facilities in which waterproofing, thermal insulation and roof covering materials are produced. Polpan Kz, one of the BTM Group companies, is a facility that operates in Kazakhstan and annually produces 75,000 m³ insulation plates.

Expanding its range of products since its foundation, BTM's products offer a wide range that can respond to all needs of the users, all the way from roofs down to bases. Thanks to the users, all the way from roofs down to bases. Thanks to the technology owned by BTM, a capacity, and ability to produce 180 different products when required is available.

We offer the following solutions;

- Shingle Decorative Roof Coverings
- Corru-bit Channeled Bituminous
- Roof Coverings
- Poliroof Rock Roofing Covers
- Undertile Waterproofing Covers
- Ancillary Roofing Materials
- Waterproofing Covers

In the insulation sector, BTM offers;

Polymer bituminous waterproofing products (Polybit, Plastobit, Elastobit, Levobit)

PVC-based synthetic membranes (Polyplan)

Roofing materials (Bitumen-based shingle - BTM shingle)

Roofing material (Channeled bituminous shield-Corru-bit)

Bitumen-based building chemicals (Emulsions, Solutions, Joint fillers, Coating materials)

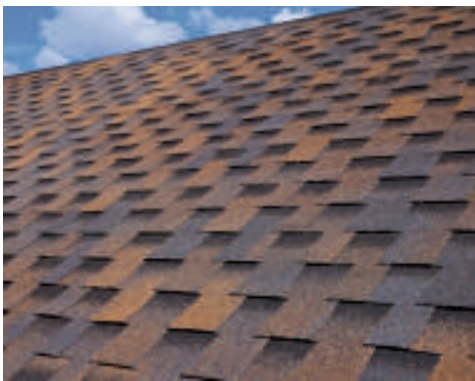
Thermal insulation systems (XPS thermal insulation plates - It has a wide range of products with BTM Plus.)

Prioritizing customer satisfaction, BTM has certified its structure towards new and competitive solutions, which has been adopted as a principle of BTM, with the ISO 9001:2000 certification in 1997.





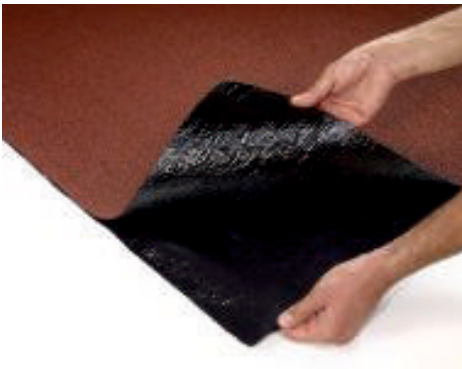
BTM Shingle Decorative Roof Coverings



BTM Corrugated Channeled Bituminous Roof Coverings



BTM Poliroof Rock Roofing Covers



BTM Under Tile Waterproofing Cover



Self-Adhesive Tapes



Self-Adhesive Waterproofing Covers





About Wallboard;

Wallboard is a BZ Construction trademark. Having been founded in Gaziantep in 2005, BZ Construction operates in the insulation sector.

State of the art production is carried out in the Gaziantep facilities of BZ Construction, established on a 200,000 m² area. The facility producing the Wallboard trademark has a production capacity of 700,000 m³/year.

CE and TSE certified Extrude Polystyrene (XPS) insulation plates and Expanded Polystyrene (EPS) insulation plates, produced at a high-quality in global standards, are conveyed to the domestic and foreign consumers through the wide dealership network.

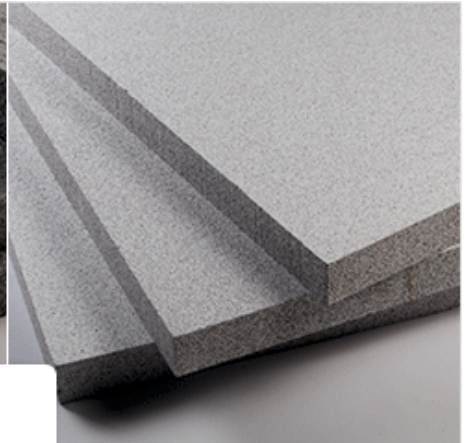
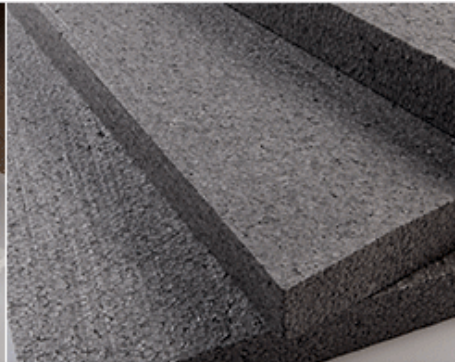
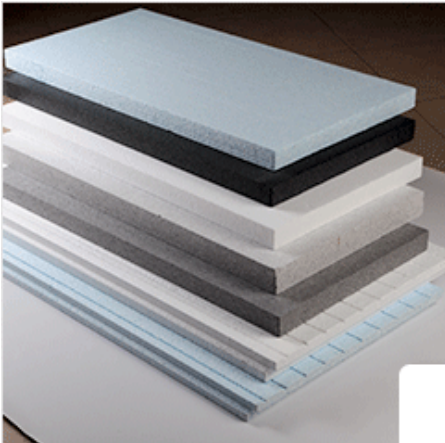
With its high production capacity, BZ construction will continue offering high-quality products to the domestic and foreign consumers, and contribute to the Turkish economy.

BZ Construction has the TS EN ISO 9001:2008 Quality Assurance System.

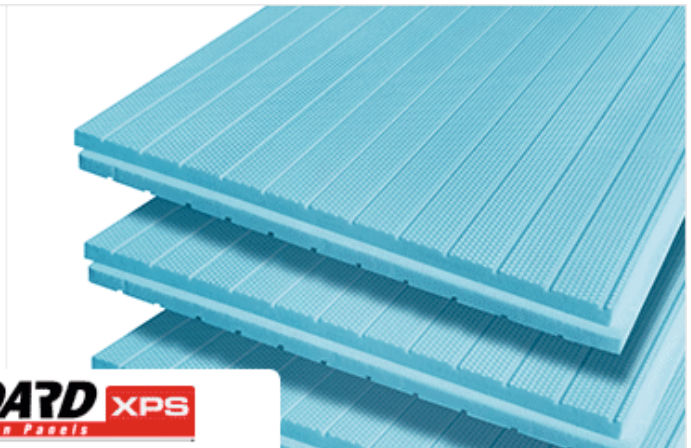
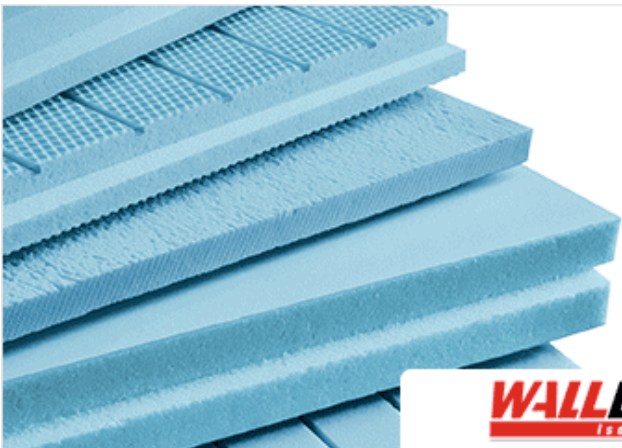
We offer the following solutions;

- EPS (Expanded Polystyrene Foam) Insulation Plates
- XPS (Extruded Polystyrene Foam) Insulation Plates
- Jacketing Plugs





WALLBOARD EPS
Isolation Panels



WALLBOARD XPS
Isolation Panels



WALLBOARD DUBEL
Isolation Panels



About Ravago;

Ravago A.Ş. Founded in Belgium in 1961, it is a group of plastic and building products in the world, which operates more than 350 in approximately 40 countries, engaged in production-selling-marking activities in the world. The Ravago group serves under the name of Ravago Building Solutions, which offers product and system solutions to the construction and insulation sector. Ravago building solutions have adopted the principle of providing customer satisfaction with the superior products and solutions it offers to the construction sector. With its many product groups that it produces and distributed, it continues its sales and marketing activities of world -famous brands.

We offer the following solutions;

- Thermal insulation
- Insulated facade solutions
- Roof and Waterproofing
- Design and decoration
- Dressing facades
- Mechanical and Installation Insulation





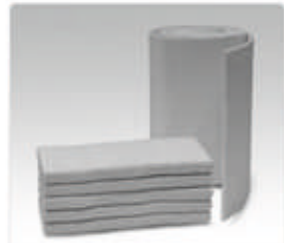
RAVATHERM XPS
THERMAL INSULATION



RAVATHERM SW - ROCKWOOL



BITUMINOUS MEMBRANE



RAVATHERM - CERAMIC WOOL



DOWSIL™ 895 STRUCTURAL
FACADE SILICON



DOWSIL™ 3363 GLASS INSULATION
SILICONE



What is Rockwool?

Rockwool is; a natural insulation material that is obtained by melting volcanic rocks such as dolomite and diabase in 1400-1600 °C into lava, turning the lava into the fiber, and mixing the fiber with a binder and putting it to special treatments.

Terrawool Rockwool prevents the moisture from being kept within the building, and any moisture-related problems thanks to its low diffusion resistance, while behaving as a good water repellent.

Due to its dimensional stability, it is not affected by possible temperature transitions. Resistant to high temperatures, Terrawool rock wool provides thermal and sound insulation with a single material it is also a reliable material for the insulation.

It provides any energy saving up to 50% by significantly decreasing the heat loss.

It's economical. It covers its investment cost within 2-3 years.

It provides both thermal and sound insulation of the building facade.

It prevents the information of heat bridges and protects the outer shell of the buildings from abrasions.

It protects the reinforced concrete elements from corrosion.

We offer the following solutions;

- Partition Plate
- Roof Blanket
- Furnace Plate
- Solar Collector Plate
- Air Conditioning Plate
- Folio-Backed Air Conditioning Plate
- Facade Plate
- Jacketing Plate
- Panel Plate
- Floating Floor Plate
- Industrial Plate
- Industrial Blanket
- Industrial Blanket(Rabitz Wired)
- Terrace Roof Plate
- Interior Wall Thermal Insulation Panel
- Fire Door Plate
- Ship Plate
- Ship Blanket
- Ship Blanket (Rabitz Wired)
- Cast Stone Wool



It provides protection against cold in winters, and extreme heat in summers.

It protects the indoors surface paint by avoiding condensation and dampness within the building.

It does not let water in its structure and has a high vapor permeability.

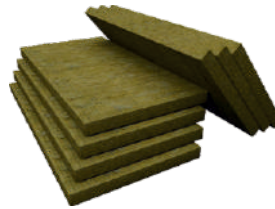
Its service life is equivalent to that of the building.



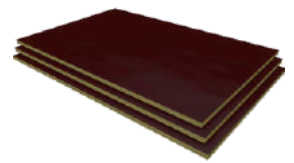
Partition Plate



Roof Blanket



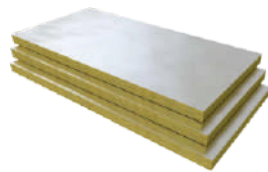
Furnace Plate



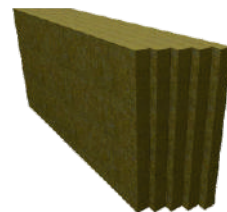
Solar Collector Plate



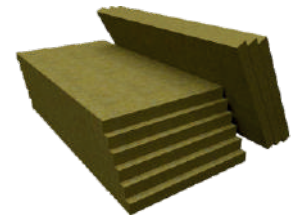
Air Conditioning Plate



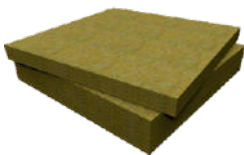
Folio-Backed Air Conditioning Plate



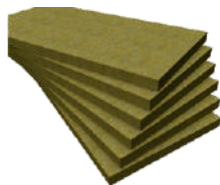
Facade Plate



Jacketing Plate



Panel Plate



Floating Floor Plate



Industrial Plate



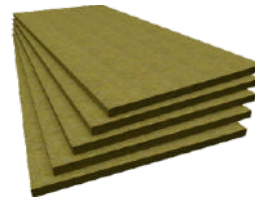
Industrial Blanket



Industrial Blanket(Rabitz Wired)



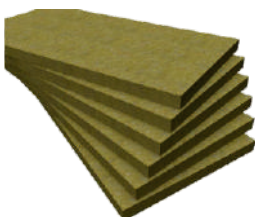
Terrace Roof Plate



Interior Wall Thermal Insulation Panel



Fire Door Plate



Ship Plate



Ship Blanket



Ship Blanket (Rabitz Wired)



Cast Stone Wool



What is Nanodrain?

Nanodrain Protection and Drainage Plates are plates made of high-density polyethylene (HDPE) used as a concrete plates beneath the floor, for protection of the ground wall, as an anti-leakage material two-layer horizontal and vertical constructions, as a reinforcement on moist walls in the indoor side, as a protection material against hydrostatic pressure, acidic groundwater and gas accumulation on the ground walls and basement curtains behind the soil or ground level, and as a waterproofing layer on surfaces with ceramic bases.

Nanodrain plates do not harm potable water, are incorruptible, impact-resistant, and do not get deformed. With its bubbles towards outside, a permeable channel system is established in the intermediate section, thus ensuring the breathing of the structure. They are the ideal solution for products high drainage capacities and green roof applications.

Nanodrain Protection and Drainage Plate is a reliable solution for water problems in all construction projects.

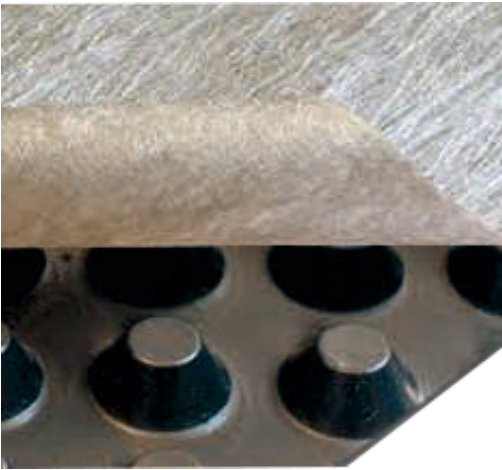
We offer the following solutions;

- Protection Plates
- Faltd Drainage Plates
- Perforated Drainage Plates
- Polyethylene Insulation Membranes





**Nanodrain Fleece
Felted Drainage Plates**



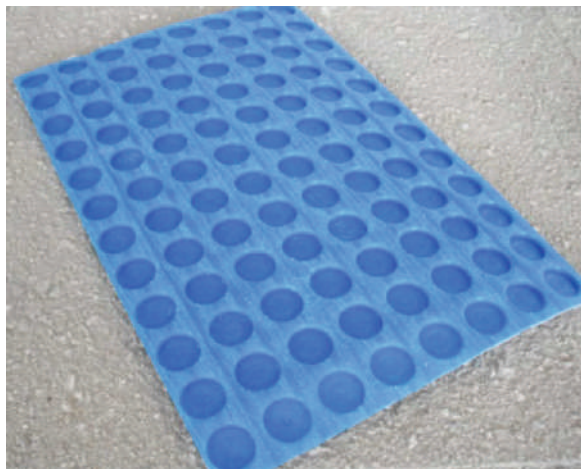
**Nanodrain 500 MS
Protection Plates**



**Nanodrain 20 Perforated
Drainage Plates**



**Nanodrain Membrane
Polyethylene Insulation Membranes**





What is NanoGreen?

NanoGreen is an ideal system consisting of perforated HDPE bubbly plate, PP filtration geotextile layer, moisture-holding geotextile felt, and LDPE root protection folio.

NanoGreen is easily and quickly floored over the waterproofing system thanks to its system components and supply in rolls.

Thanks to the 20 mm-high bubbly drainage plate, Nanodrain offers a 150 kN/m² superior pressure resistance and high water storage capacity.

With its perforation protection and geotextile layer for filtration, Nanofabric SF 32 prevents the deposited material from lapsing into the drainage plate, thus closing the gaps.

Nanofabric 400 is laid as a moisture-holding layer between the Nanodrain drainage plate and the Nanodrain Antiroot root holding folio. Nanofabric 400 is especially efficient as a protective agent on rough surfaces.

We offer the following solutions;

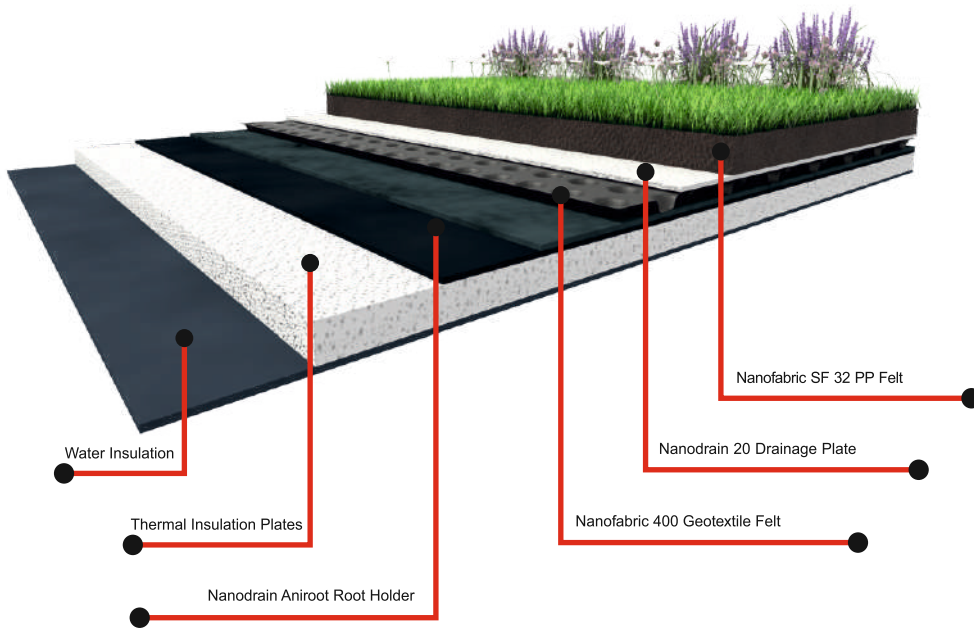
- PP filtration geotextile layer (Nanofabric SF 32)
- Diffusible, Perforated HDPE drainage plate (Nanodrain)
- 100% Polyester moisture holder felt that is especially protective on rough surfaces (Nanofabric 400)
- LDPE root holder folio (Nanodrain Antiroot Root Protector)

Constituting the undermost layer of the NanoGreen green roof system, and laid on the waterproofing system, Nanodrain Antiroot Protector protects the roof structure and the ground waterproofing system from plant roots.

Nanodrain drainage plate has a water storage capacity of 5 lt/m² for dry spells.

As Nanofabric SF 32 is a breathable system, it is also suitable for green reverse roofs. Sd values (vapor permeability equivalent): approx 0.4 m.





Technical Specifications;

Material	Perforated HDPE bubbly plate (Nanodrain)
Bubble Height	approx. 20 mm
Pressure Resistance	approx. 150 kN/m ² (EN ISO 604)
Horizontal Drainage Rate	approx. 2.5 lt/m-s (EN ISO 12958)
Vertical Drainage Rate	approx. 10 lt/m-s (EN ISO 12958)
Water Storage Capacity	approx. 5 lt/m ²
Weight	approx. 1000 gr/m ²
CE Marking	DIN EN 13252
Roll Size	2 x 20 m

Material	PP filtration geotextile layer (Nanofabric SF 32)
Weight	approx. 110 gr/m ²
Opening Width	approx. 0.15 mm (EN ISO 12956)
Water Permeability Degree	approx. 0.08 m/s (EN ISO 11058)
Roll Size	2.10 m x 150 m

Material	100% Polyester (Nanofabric 400)
Color	Grey Melange
Weight	400 gr/m ²
Roll Size	2 m x 50 m

Material	LDPE (Nanofabric Antirroot Root Protector)
Color	Black
Thickness	380 microns
Roll Size	4 m x 25 m



What is Depron?

Depron insulation panel ensures heating the space more quickly. It does not immerse water or get peeled. It reduces steam penetration, provides moisture protection for walls and ceilings.

Depron insulation panel 3 mm/6 mm.

Steam distribution resistance value μ : 650/450 (DIN 52615)

Steam retarder value s: 2.0 m / 2.7 m

With ready-for-use wallpaper: as other wallpapers, B2 (normally inflammable) (DIN4102), (Test MPA NRW), Dortmund.
Test certificate no. 230007514

Noise insulation ΔI_w : +16dB (DIN 52210)
Compression 10%: 0.1 Mpa (DIN 53421)

We offer the following solutions;

- Depron G3 Under Flooring Heat Temperature Plate
- Depron G6 Indoor Condensation Plate

The application process of the flooring manufacturer must be abode by. It is resistant to water-based substances such as cement, lime, plaster, salt and alkali (it is not resistant to organic solvents).

Ready-for-use wallpaper lining work as a flame retardant on floors with materials such as a plastic, paint and glass wool, plastic plaster, diffuser paint, and glass fiber. It can be used both as a medium layer as a moisture protector and for increasing thermal and noise insulation under particle boards, it is ready to be used on parquet strips and laminated flooring (on bolted and threaded joint systems).








Material type: panel-shaped polystyrene solid foam panel

Thickness : 3 mm and 6 mm
 Density : 40 kg/m³, 33 kg/m³ (DIN 53420)
 Dimensions : 1.25 m x 0.80 m
 Heat conductivity : 0.030 W/mK (measurement DIN 52612)

When rated as per the heat conductivity group (calculation value IR= 0.035 W/mK), the heat resistance for 6 mm-thick Depron insulation panels is 0.17 m² K/W.

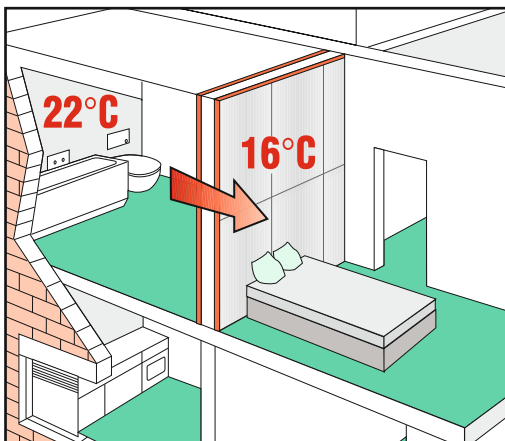
Depron insulation panel 6 mm
 It has the same heat insulation values:

	24 mm wood
	100 mm brick wall
	360 mm normal concrete

For 3 mm-thick Depron insulation panel:
 Half the values are applicable.



- Cracks in the walls and ceilings are sealed and flattened using filling plaster.
- Depron insulation panels are attached on ceilings, outer walls, window frames, and shutters.
- MasterTile FLX 22 ceramic adhesive is used for attachment.
- Depron insulation panels are attached by pressing on the ends so that they remain attached, double-layer treatment can be applied if necessary.
- The Depron insulation plate is processed scraper, using a dispensing comb.
- Before attaching the high-quality wallpaper and wall panels, the adhesive roll is prepared. The roll ensures a durable attachment along with the wallpaper.



Increase in the heating costs due to the increasing energy prices is prominent on the utility bills of many occupants. If there are separation walls between two different rooms (for example, 22 °C/16 °C), a significant heat loss is experienced. With the energy prices increasing with the energy use, this has become an even greater problem. In order to decrease heat losses, the best thermal insulation can be achieved with 6 mm-thick Depron insulation panels on both sides of the walls. The closed cellular structure ensures a perfect insulation despite being thin.

On a 10 m² uninsulated wall with (4 x 2.5 m) k value = 1.96 (11.5 cm pumice stones banded on both sides), around 34 liters of fuel flows annually. If a 6 mm Depron insulation panel is used, with a k value of 1.18, 20 liters of fuel flows on the same wall each year. A saving of approximately 40% is achieved. If the temperature of an unheated room is 7 °C (stairs, for instance), heat loss is reduced with double-sided thermal insulation, and an annual fuel saving of 35 liters is achieved. So, the total heating cost is decreased by 11 to 14.4%. Indoor wall surface temperature can be increased by 5 °C in winters. The time for Depron ile ısıdan tasarruf edin heating the room will get shorter.



About Kopuzlar Eva Rubber;

Kopuzlar Group, which has been operating in many sectors since 1973, has started to supply products and services to insulation and packaging sectors with EVA and Cross-Linked Polyethylene Foam insulation products in line with its new investments.

Rubber:

Rubber and EPDM Foam products have closed cell and crosslinked cell structure. They provide excellent results in thermal sound insulation. They are resistant to freezing. Its vibration absorbency and acoustic insulation is extremely high. It cannot be affected by building and industrial chemicals.

XPE:

With the mission of minimizing energy losses and protecting energy resources, we produce heat, sound and moisture insulation solutions that can be applied easily in all areas. Our Foamfleks products offer insulation services under floors, under floor screeds, common walls, roof heating systems and under parquet.

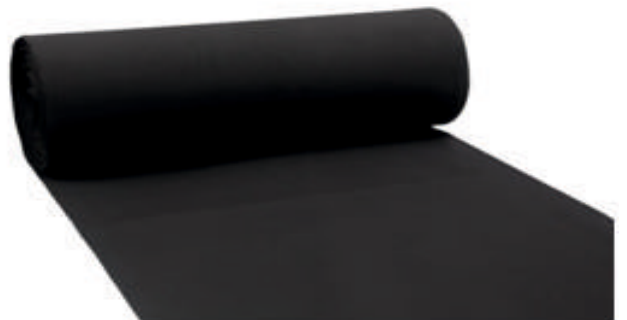
EVA:

EVA insulation boards have many uses in the building sector. They are used as a sound and thermal insulation board in flooring, floating floor systems, parquet and underfloor heating systems, gypsum panel boards, steel construction structures, foundation to roof.

We offer the following solutions;

- Foamflex XPE Cross Tied Polyethylene Mattress
- Foamflex HPE Mattress
- Foamfleks Rubber Mattress
- EVA Insulation Boards





What is OSB (Oriented Strand Board)?

Moisture and impact-resistant, wide particile board that has been fired, produced upon combining with chemical auxiliary materials, and provided for uses with wood panels.

Maximum resistance can be achieved through laying the wood (spruce, pinewood, etc.) boards, which are coated with resin and water-repellent chemicals, towards different directions on each layer. Boards laid in order to produce the strong and durable panels are manufactured upon induration under high temperature and pressure.

Advantages of OSB;

- High mechanical strength
- Maximum stiffness, mounting, punching and nailing resistance
- Flawless power, balance and weight ratio
- Strength under sensitive and heavy conditions
- Easily workable
- Advantage of practical transportation and shipment to the operation field.
- Minimum ecological impact and 100% recycle

We offer the following solutions;

- OSB II (Construction Application)
- In constructions, indoors,
- In interior wall details,
- OSB III (Roof Covering)
- High strength of water, dampness and impact in outdoors roof coverings.

OSB Fields of Utilization;

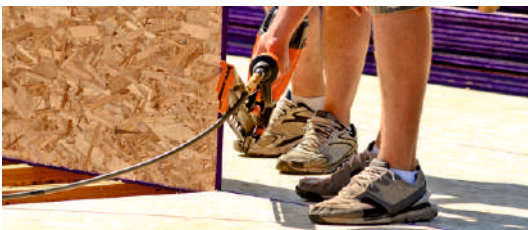
- Load-bearing ground applications
- Walls and partitions
- Furniture manufacture
- Roof coverings
- Fences, field protection, and occupational safety barriers
- Clerestories and wooden structures
- Packaging, boxing, pallet and dry storage rooms
- Decorative covering and architectural uses.



 Westboard



OSB Wooden Panel





About Kobau;

For more than 60 years of specialties in all empirical issues, Kobau GmbH & Co. It combines the product and service pallets of KGs, which contain practical solutions for joints and cracks. Our experience and innovation will help us overcome future challenges, because it has not touched to protect and buy valuable building fabrics. We rely on the future -oriented technology we produce tissue and sealing bands. Special products such as adhesives or paste supplements complete our portfolio. Short delivery times, your own storage, intensive sales network and fast shipping. In addition, an authorized private and high - quality team supports the customer's problem analysis, material selection and processing. And when it becomes very difficult, we also develop special solutions. Trusting Kobau should always be able to work efficiently.

We offer the following solutions;

- Glass Fiber (Arap)
- Polyester felt
- Elastic Knitting
- Crack band





KOB AU Armiera VP 130



KOB AU Elastic-Gewebe 10/10



KOB AU Polyester Vlies K 30



KOB AU Optitape SH





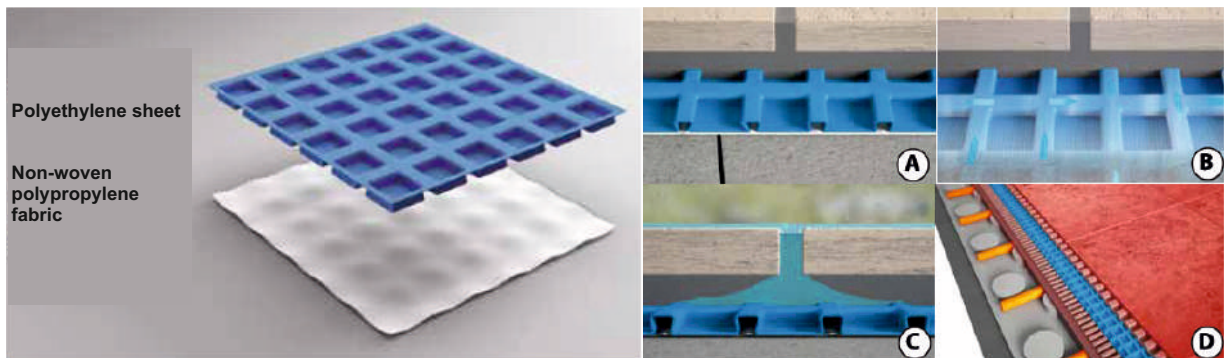
About Progress Profiles;

Research, trial and innovation: Progress profiles always struggle with new challenges and for development It has been ready to explore new ideas and create exciting new synergies. Far away from the known horizon We are determined to look at the opinion and intuition. Our team is perfectly in harmony with the market and developing trends It can foresee and meet the most advanced arouses. Our complainants are our only focus on their arguments, priorities and dreams. As a result, we have achieved worldwide success for more than 32 years. Throughout generations, our family company has become a global company with its constantly growing turnover.

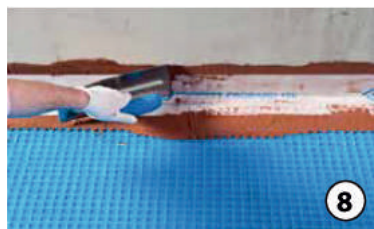
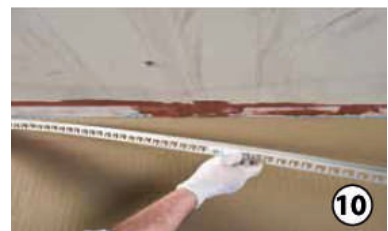
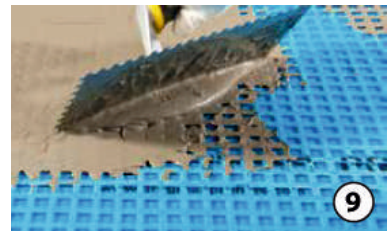
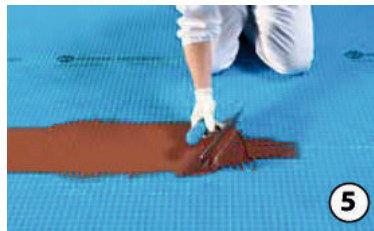
We offer the following solutions;

- Prodeso ECO Polyethylene membrane
- PROBAND 150 ANNEX TANE
- PROBAND KOLL EU EK PLACE BAND GETIZER





Application steps;





What Is Nonwoven Geotextile?

It is the nonwoven textile product that is made of polypropylene or polyester raw material, in which fibers are bonded through the pinning method.

There are no warps or wefts in nonwoven geotextile. Nanofabric geotextile felt is a permeable textile product that can be used in combination with any material relating to ground subsidence, land, and geotechnical engineering. It has a homogeneous structure. It consists of several types, depending on the needs of the ground and the structure. It is used in structures with filtration, fortification and protection purposes. As needs of each structure are different, needed types are selected from the technical table.

We offer the following solutions;

- Polyester-based Recyclable Geotextiles
- Polyester-based Original Geotextiles
- Polypropylene-based Geotextiles

Use Purposes:

- Protection
- Separation
- Filtration
- Asphalt coating

Nanofabric® SF Geotextiles

Nanofabric SF, which is a unique nonwoven fabric made of 100% polypropylene with thermal binding fibers, ensures reliable and longlasting performance in structural statics. Nanofabric SF has been used in road surface fortification, drainage and railroad applications solely in the geotextile sector that is equivalent to surface area of a 15-meter wide, three-lane road that encircles the earth.



Polypropylene Felt



Polyester Felt - Grizzled



Nanofabric Geotextile Felt Fields of Use

- Separation of waterproofing thermal insulation layers, protection of the insulation, drainage of excess water, prevention of blockages in the drainage tubes through winding,
- Prevention of highway and railroad subsidences,
- In drainage systems,
- Under geomembranes,
- For pitting problems, in reinforced fillings, erosion protection, in coastal protection areas such as rivers, lakes, and seas,
- In filtration, weak ground reinforcements, asphalt reinforcements,
- For drainage blanket purposes under unpaved roads, paved roads, airstrips, road fillings,
- In highways, tunnels and underground facilities,
- In subways, agricultural fields, garden terraces, and sports fields,
- In solid waste landfills, and irrigation channels.

Polyester Felt - White



Polyester Felt - Colored





Technical Specifications of Plaster Meshes;

Plaster meshes are used to prevent cracks that are formed due to various reasons on plastered or pasted surfaces. It is woven with glass yarn. Yarns are fortified against external weather conditions and alkali mediums with a special coating after the weaving. The service life of plaster meshes depends on alkali resistance. Alkali resistance is of high importance when plaster meshes are used in cement-based plasters and pastes. Otherwise, fibers will weaken and snap. As the coating thickness on the plaster mesh increases, alkali resistance of the material also increases. Coated weight of meshes used outdoors and in jacketing systems must be at least 20% of the uncoated weight. Dimensions of the plaster mesh must be stable, and must not overstretch. As plaster is not flexible, mesh stretch will cause application problems. The flexibility of the plaster mesh in either direction must not be greater than 4%.

We offer the following solutions;

- Nanoheat E Glass Class
- Alkali Resistant Reinforced Mesh
- Nanoheat Eco C Glass Class
- Alkali Resistant Reinforced Mesh
- 50 mm x 90 m Sheetrock Grout Band

Alkali Resistance Test

Breaking strength of plaster meshes is measured in the solid state as per DIN EN ISO 13934-1. Then it is kept in an alkali medium (in 5% NaOH solution) for approximately 28 days. After the test, breaking strength is remeasured in either direction. Such values must not be lower than 50% of the pre-test values. If these values are below 50%, plaster mesh will not last long.





Nanoheat E Glass Class
Alkali Resistant Reinforced Mesh



Glass Classes and Features

The major material of glass is sand. Besides SiO₂ Silicon dioxide, it contains different elements in its compound, such as aluminum oxide, calcium oxide, magnesium oxide, and sodium oxide. There are many glass types depending on compounds of these elements in different proportions: Aglass, C Glass, D Glass, E Glass, R Glass, S Glass, AR Glass and Z Glass. AR Glass and Z Glass are special glass types that are resistant to alkali.

Nanoheat Eco C Glass Class
Alkali Resistant Reinforced Mesh



There are two types of Glass Fibers used in Plaster Meshes depending on the production method. "Glass Filaments" and "Glass Pile Fibers"

Glass Filaments (glass fibers) are produced using the "Fast Extrusion Method". Glass mixture melted in the furnace is extruded through many holes on the furnace floor, and put to the cooling process. As E Glass Filaments are produced with this method, they are highly resistant. 90% of the glass fiber used in textile is made of E Glass.

E Glass Class
50 mm x 90 m Sheetrock Grout Band



Advantages of E Glass Class

It has a high tensile strength in the low stretch. Stretching is fully elastic, displays a linear elongation until the breaking point. Its density is very low. Its thermal properties are decent. It is non-combustible, does not dissipate vapor or hazardous substances under heat.

It is resistant to fats, oils, and solvents.

It is resistant to acids, and bases with pH values between 3 to 9.



What is Kobaflex Sd60?

Kobaflex Sd60 insulation membrane ensures reliable insulation of joints and cracks beneath ceramic and stone floors in wet spaces. It is used both on floors and walls. It is suitable especially for walls consisting plaster panels, and all smooth surfaces that can carry the ceramic above.

Application:

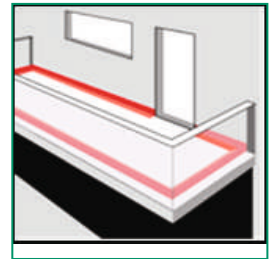
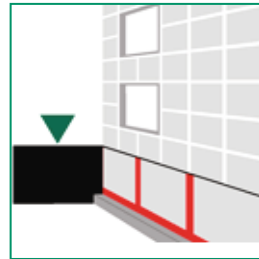
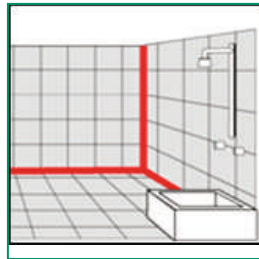
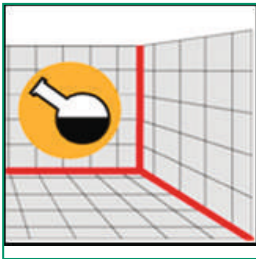
The application surface must be supporting, and dry and there must be no dust or dirt. If there are broken pieces on the edges, they must be repaired in advance, and the roughness of the surface must be eliminated.

Plaster or similar particles on the surface must be scratched. MBS- Mastertile FLX 22 ceramic adhesive is applied on the carrier surface using a 4 mm toothed trowel (so that it brims over the insulation membrane for approximately 10 cm). The insulation membrane, cut in advance in the necessary dimensions, is placed on the wet adhesive, and the surface is smoothed with a smoothing trowel. Meanwhile, the toothed grout under the Nanoshield insulation membrane must be equally pressured.

The next membrane piece is attached end to end, or so that they overlap. If the end to end attachment is made, the junction point is attached with grout by cutting 10 cm wide band on the junction point. Overlapping must be minimum 4 cm. It is recommended that Mastertile WP 668 (Lastogum) synthetic resin-based dispersion adhesive is used on junction points and corners. Ceramic flooring can be carried out after the membrane is dry.

Textle waterproofing membrane







About Redcolour;

Redcolour is an organization that has been producing in Elazığ Organized Industrial Zone since 2010 and leads to its sector by pioneer in the production of paint products in its region. It is one of the largest suppliers in the region with its annual production capacity of 2,000,000 tons, with a state-of-the-art product park that produces 1700 m² closed and 22.000 m² open area.

We offer the following solutions;

Paint group

- Diamond series
- Gold Series
- Silver Series
- Exterior series
- Ceiling and lining series
- SPECIAL PRODUCT SERIES
- Synthetic series
- Industrial Series
- Chemical series





Paint Groups



Diamond series



Gold Series



Silver Series



Exterior series



Ceiling and lining series



Special Product Series



Synthetic series



Industrial Series



Chemical series



What is Nanoflame?

Ergonomic and Quality Cartridge Gun

Nanoflame® Cartridge guns have been produced to apply 310 ml silicon cartridges in accordance with the demands of professional users. It does not stretch thanks to its uniform aluminum main frame. This ensures easy application of materials with dense content, such as mastic, while preventing the products from getting out or slipping during application. The fixed plastic flake on the far end of the push shaft perfectly fits on the hole within the tube. And this prevents the bottom stopper of the applied cartridge from rotating. Considering all these features, compared to an ordinary cartridge gun, it does not tire out the user. It is light and long-lasting.

Sausage Gun

Nanoflame sausage guns are used for quick application of mastic, silicon, etc. products on surfaces. It allows for an easy, clean and quick application on the joint. Designed for professional type applications, it is very light and high-quality products with its aluminum structure. It can be dismantled and easily cleaned during cartridge and sausage changes.

We offer the following solutions;

- Silicon Guns
- Epoxy Guns
- Sausage Guns



SİLİKON GUNS



EPOXY GUNS



SAUSAGE GUNS





About Koruser;

We have been recognized as pioneers of the non-woven sector since our founding in 1939. KORUSER Wishing to crown our experience and expertise with a new product, we have designed and manufactured the high quality KORUSER Floor Protection Mat whose purpose is to provide the construction industry with a cleaner and safer environment.

We have determined the principal distinguishing features of the KORUSER Floor Protection Mat as “extra strength” and safe “nonslip” backing.

With its extra strength and durability it provides protection for all interior and exterior surfaces such as stairways, carpets, windows, and frames of wood, laminate, ceramic tile, natural stone, etc. during construction and renovation work.

With its non-slip backing, and its strong and even adhesion to surfaces, it prevents accidents and hazards to a significant degree in spaces where it is applied. KORUSER Floor Protection Mat;

Protects the floor against stains caused by spillage of liquids such as paint etc. Its breathable texture prevents moisture from accumulating on surfaces. Being easy to transport and apply, it can be re-used with convenience. Having a low rate of waste, it saves on time and expenses.

Thanks to its advantages and superior qualities, KORUSER Floor Protection Mat is a modern product which can be used in a variety of applications.

We offer the following solutions;

- Koruser Foil 0,91x31 m
- Koruser Foil 1,00x50 m

Usage areas;

- Floor Protection
- Transportation
- Furniture Protection
- Playgardens
- Painting
- Construction
- Slippery Ground





Safe use & Anti-slip

Koruser is a product which can be easily spread overall ground surfaces such as wood or marbel and it enables secure working environment through its sure-footed feature.



Easily applied

All surfaces such as stairs, corners, frames, baseboards and other surfaces which are difficult to apply.



Paint Proof

As there is a 1m covering on the top of the Koruser product, it is paint and liquid proof. It keeps the paint and the liquid on the surface. It is easily cleaned and you can reuse it.



Prevents Moisture, Breathable

Due to its breathable structure Koruser vaporizes the remaining moisture on the ground and eliminates it.



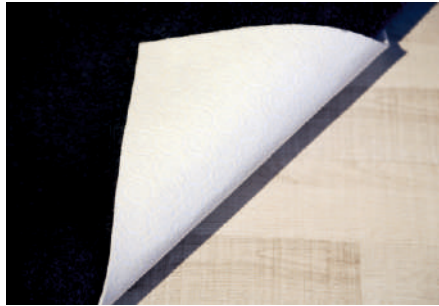
Saves Time

As it is easy and fast to spread over all ground surfaces, it takes the least time to apply according to other similar products.



Reuse

After Koruser is used its surface is cleaned, it is folded and stored for reuse. It is benecial.





About Wabis;

In Poland, Wabis started its activities in 1999 on production of roofing materials as a family business. ShortAt the time, it has become a large company that produces its own roof systems. With the importance it attaches to quality and innovation, it has developed even more and met all the roof needs. It has reached its capacity to produce and marketing about 400 kinds of roof accessories. The fact that 90 percent of the products it sells is producing in their own facilities has provided the ability to produce roof accessories suitable for different conditions, different requirements and different designs in different regions. Thanks to these skills, Wabis roof systems in 27 countries around the world are safelyis used.

Modern machines, which constitute the production facilities, continue to develop and grow with the experiences of R & D departments, expert employees and sectoral partners, which are always focused on innovation and needs. The products have been subjected to the necessary tests in their laboratories from raw materials to production and final products and are approved by CE and BBA quality certificates.

We offer the following solutions;

- Climateq roof and facade covers
- Isolation Moisture Barrier and Facade Covers
- Dry Mahya System Accessories
- Wall and chimney bands
- Alumnum Creek
- Eaves Ventilation Accessories
- Clamps and clips
- Bird Preventive Systems
- Roof Walking Roads and Steps
- Snow -holding systems
- Butil bands
- PVC roof output elements

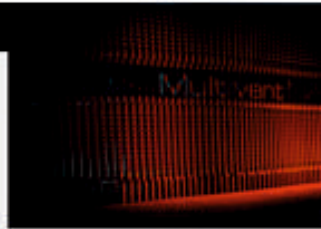




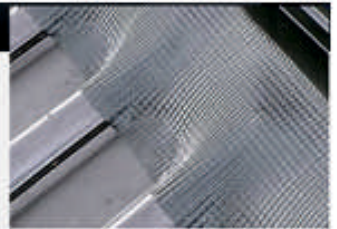
Climateq roof and facade covers



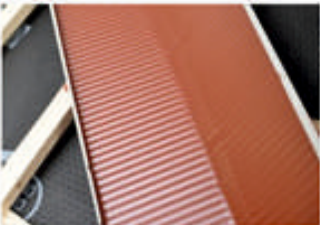
Isolation Moisture Barrier and Facade Covers



Dry Mahya System Accessories



Wall and chimney bands



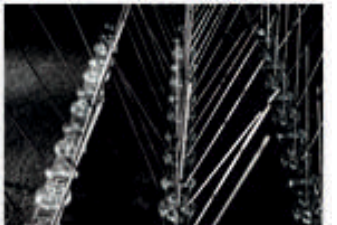
Aluminium Creek



Eaves Ventilation Accessories



Clamps and clips



Bird Preventive Systems



Roof Walking Roads and Steps



Snow - holding systems



Butil bands



PVC roof output elements



What is Nanobutyl?

We offer the following solutions;

- NANO BUTYL EN 448 BUTYL TAPE
- NANO BUTYL EN 448 ALUMINIUM BUTYL TAPE
- NANO BUTYL EN 448 BUTYL FITIL
- NANO BUTYL EN 448 BUTYL TAPE WITH FELT

NANO BUTYL EN 448 BUTYL TAPE

Properties;

Butyl tapes, with their flexible structure, adhere to the movements very well, adhere well to almost all surfaces and provide superior insulation performance.

Usage areas;

- For sealing between the two metals.
- Metal roof applications and air ducts
- Facade cladding systems.
- Door, window, roof and all kinds of sealing works.



Thickness: 1 mm to 10 mm
Width : 9 mm to 1000 mm

NANO BUTYL EN 448 ALUMINIUM BUTYL TAPE

Properties;

It is a high UV resistant, flexible, self-adhesive butyl film coated with aluminium film. It is capable of operating from -30 °C to +90 °C.

Using Areas;

- At the end and of curtain wall panels.
- Insulation of metal facades and air ducts against water and moisture
- In classical facades and winter garden applications
- All kinds of old and new roofs.



Thickness: 1 mm to 8 mm
Width: 25 mm to 1000 mm



NANO BUTYL EN 448 BUTYL FITIL

Places of Use;

Used as sealing material.

Properties;

- Long-lasting rubber sealant properties. (No vibration)
- It prevents filling of cavities, moisture and dust.
- Resistant to aging, environmental conditions and UV.

Technical Data;

Color: Black, Gray, White

Density (gr / cm³) 1,6 +- 0,2

The product is anti bacterial.

Technical data are approximate data obtained based on +20 °C air temperature and 50% relative air humidity.

Application;

It is easily applied by hand to the surface to be applied.

It is recommended that the application be carried out at temperatures below -5 °C and below +40 °C.

Storage;

It must be protected against frost and severe weather conditions.

On wooden pallets, they should be stored in a cool, dry and moisture-free environment between +10 °C and +20 °C.

Storage life is maximum 2 years provided that the above mentioned storage conditions are observed.

NANO BUTYL EN 448 BUTYL TAPE WITH FELT

Polypropylene nonwoven fabric covered butyl tape. Provides superior performance in wet volume areas. It is self-adhesive and flexible.

Usage areas;

Wet volume sealing. (Terrace, balcony, roof, bathroom etc..)
Floor wall joints.

Thanks to its soft structure, it is easily applied even on indented surfaces.

Product sizes;

Width: 25 mm to 1000 mm





About Soudal;

Soudal is Europe's largest independent mastic, PU foam and adhesive manufacturer. Soudal is a strong brand worldwide. It provides service to business owners in construction, retail channels and industrial installation areas and with 45 years of experience to end users in more than 130 countries worldwide. With 11 manufacturing sites spread across 4 continents and 35 subsidiaries worldwide, Soudal offers the best technical and logistical support.

In 2011, putty all the light groups, adhesives and polyurethane foam production and sales of the completion of the process that began with the acquisition and to meet the rapidly developed and growing business volume in the last three years Soudal Turkey organization, has moved to new production facilities. The new facilities in the Tuzla Organized Leather Industrial Zone, with a covered area of 6000 m², covering 3600 units, offer daily 150.000 cartridge refills and 2500 pallet storage with 12 meter high rack systems. Air conditioning, which allows storage of stocked products under ideal conditions, has modern warning and extinguishing mechanisms that protect against possible fire risks and systems where stock movements can be monitored instantly over computers and web network.

We offer the following solutions;

- Fix All
- Mastics
- Pu Foams
- Adhesives
- Application Equipment





■ FIX ALL



■ MASTICS



■ PU FOAMS



■ ADHESIVES



■ APPLICATION EQUIPMENT





About Akfix;

Having started its activities in the field of construction chemicals in 2001, Akfix focused on developing environmentally friendly, life-adding chemical products and technologies to provide enduring solutions to customers needs. Akfix develops different products for various customer needs. Polyurethane aerosol foams, Joint sealants Adhesives for stationery Technical and industrial adhesives Technical aerosol products reach customers with a wide range of products. Akfix has a vast knowledge and international expertise in the polyurethane foam and silicone sealant products category.

Specialized in polyurethane aerosol foams and silicone sealants, Akfix is a complete silikon Solution Master Poli.

Facilitates the business processes of professional construction and construction practitioners and complements building materials in Produces Permanent Solutions Professional.

We offer the following solutions;

- Fire-resistant products
- Adhesives
- Silicone Sealants
- Pu Foams
- Surface Coating Systems
- Aerosols
- Automotive
- Accessories

All Akfix products are manufactured in facilities in İstanbul Hadımköy on area of 25.000 m², equipped with the latest technology, high production capacity and ISO 9001 quality system certificate.







Center Office

Address:Necip Fazıl Mah. Yaver Sokak
ALK Plaza No:1 D:8 Ümraniye/ İSTANBUL
Phone:+90 216 339 12 12 (Pbx)
Fax:+90 216 339 12 17
E-mail:info@nanotekgrup.com

Anatolian Logistics Center

Address:Battalgazi Mah. Güzelbahçe Sokak No:15
PK:34935 Sultanbeyli / İstanbul
Phone:+90 216 540 06 75 (Pbx)
Fax:+90 216 540 06 80

European Logistics Center

Address:Üniversite Mahallesi, Aziz Caddesi No:26
PK:34310 Avcılar / İstanbul
Phone:+90 212 690 75 25 (Pbx)
Fax:+90 212 690 33 29

Thrace Logistics Center

Address:Hatip Ali Osman Çelebi Bulvarı
Gündüz Sefası Viawest Sanayi Sitesi
No:10/C5 blok Çorlu /Tekirdağ
Phone:0282 502 04 22 (Pbx)
Fax:0282 502 04 22



@nanotekgrup



@Nanotek-AŞ



@Nanotek_AS



@nanotek-insaat